



ENTRY POINT
INTERNATIONAL LLC

DATA CENTER PROTECTION



THE CHALLENGE

Reduce damage to internal finishes like raised access floors, electrical paneling and flat roofs where there is often heavy traffic and adverse conditions. Prevent damage, delays, contractual disputes and punch list repair costs.



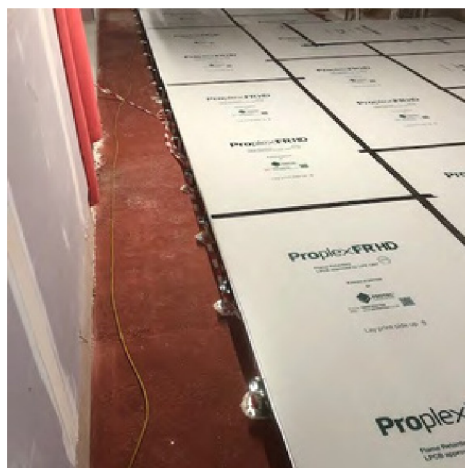
OUR SOLUTION

Using our temporary protection throughout your data centers during the build process results in reduced damage, delays and repairs.

ROOFS



RAISED FLOORS



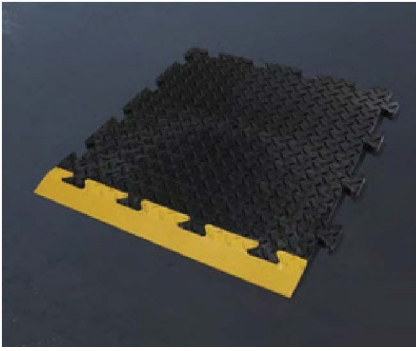
CURTAIN WALLING



We've Got You Covered

ENTRYPOINTUSA.COM

Rhino Tile® FR



IDEAL FOR PROTECTING:

- Hotmelt / Permtec / Mastic
- Traditional single ply jobs
- Walkways and access routes
- Raised access flooring

FEATURES & BENEFITS

- Lightweight, quick and easy to transport to any area on site without the use of cranes
- Safer to handle, cut and install
- No mechanical fastening required making installation more efficient
- UV, chemical and solvent resistant providing superior protection
- Tested and approved against wind uplift up to 75mph for roofing applications
- Flame-Retardant to EN13501 level Bfl-s1.
- Manufactured from rigid PVC so won't warp in adverse weather
- Extremely cost effective requiring less labor and handling
- Slip resistant, embossed surface
- Reusable so can be moved from site to site
- Recyclable

ImpactBoard FR®



IDEAL FOR PROTECTING:

- Heavy-duty applications
- Raised access floors
- Heavy traffic areas including, machinery, podiums, scaffolding towers, etc.

FEATURES & BENEFITS

- Extra strong and designed with improved compression and impact resistance
- Durable and lightweight to transport
- Can be cut easily and creates dust
- Waterproof, non-toxic and resistant to chemicals
- Twin wall profile
- Tear, puncture and impact resistant
- Flame-Retardant to LPS1207 - Certificate No. 843a/03
- Can be custom printed
- Recyclable

ProplexFR®



IDEAL FOR PROTECTING:

- Electrical paneling
- Finished walls / Curtain walling
- Doors

FEATURES & BENEFITS

- Strong, durable and lightweight
- Can be cut easily and creates no dust
- Waterproof, non-toxic and resistant to chemicals
- Tear, puncture and impact-resistant
- Flame-Retardant to LPS1207 - Certificate No. 843a/03 & Anti-Static
- Can be custom printed
- Recyclable

WHY YOU SHOULD CHOOSE ENTRY POINT

Entry Point has the heavy-duty, long-lasting, Fire-Retardant protection that general contractors working on data center projects desire. Our high density ProplexFR, ImpactBoard FR and Rhino Tile FR products fit the profile for these jobs because they can handle long term installation.

These are some of the strongest temporary protection options on the market today. These super-duty products especially shine here, as they can handle the challenge of being applied in an area with heavy, high traffic. Entry Point products have a proven track record of performance on data center applications.

Entry Point products have been used on data centers with values totaling billions of dollars. When choosing Entry Point, you are getting a proven, best in class solution for your project.

Contact US:
866-664-3129 insidesales@entrypointusa.com

More Information at:
entrypointusa.com