

ENTRY POINT INTERNATIONAL LLC

Product Data Sheet

Rhino Tile® FR

TECHNICAL DATA

Material Construction:
Polyvinyl Chloride (PVC) >95%

Description:
Flame-Retardant Interlocking Tiles
from Recycled PVC

Intended Use:
Temporary Protection of Horizontal
Surfaces

Appearance:
Black

Unit:
Tile

Dimensions:
.5 m x .5 m (~20" x 20")

Coverage:
~2.36 sf

Thickness:
14 mm (0.55")

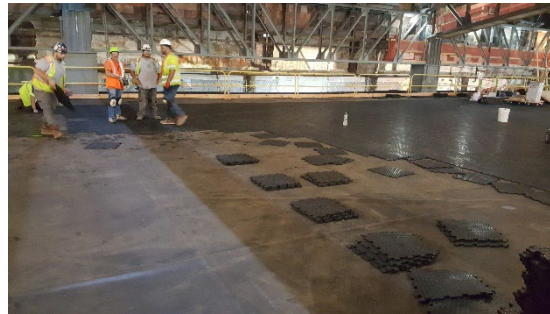
Weight:
1.85 kg (~4 lbs)

Stocking Units:
Individual Tiles or 400 Tile Pallets

Storage Recommendations:
Store away from heat sources, open
flames and strong acids and/or bases.
Store indoors within recommended
storage temperatures 10°C to 35°C /
50°F to 95°F. Keep out of direct
sunlight. Store Flat.

Issue Date:
09/15/22

Revision Date:
09/15/22



PRODUCT DESCRIPTION

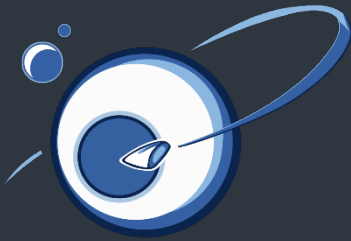
Rhino Tile FR is designed for the temporary protection of exterior and interior finished flooring, decks, roofs, and other horizontal surfaces where protection is required. Rhino Tile FR is a great alternative to fine fluted rubber matting and 8' x 4' sheets of FR Plywood.

KEY FEATURES & BENEFITS

- Less labor, quicker, easier and more efficient to install; no mechanical fastening required in most applications
- Safer – lower risk to workers during installation and handling, no splinters, easily trimmed with a jigsaw, one-man installation vs two men handling 4x8 sheets of plywood
- No warping when wet, unlike plywood, requires virtually no maintenance after installation, less man hours to monitor safety of temporary protection
- More cost effective for every project due to speed of installation and extended life
- Made from 100% recycled PVC & can be re-used multiple times
- Inherently Flame-Retardant
- UV Stable
- Resistant to most solvents and chemicals
- Non-Toxic when being cut or installed through dust or fumes produced

Entry Point INTERNATIONAL LLC
866-664-3129

www.entrypointusa.com

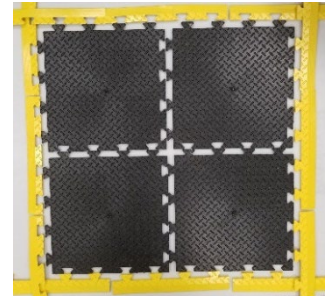


ENTRY POINT INTERNATIONAL LLC

Product Data Sheet

Ramped Edges

For both safety and ease of use, Protec offers ramped edges that are compatible with the Rhino Tile FR. Manufactured in safety yellow, these pieces clearly identify transitions and improve the movement of rolling loads.



TEST DATA

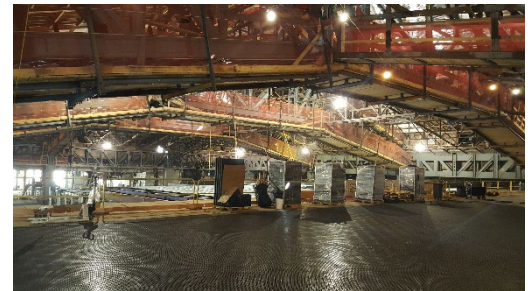
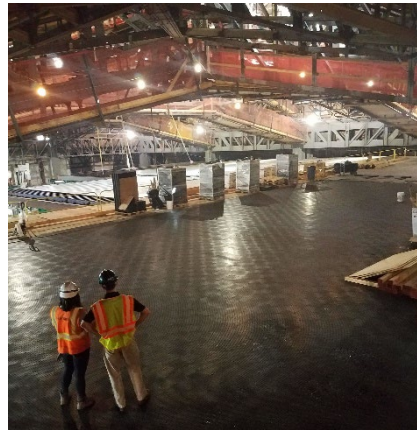
Manufactured in an ISO9001 accredited plant in the UK

Flame Retardant to European Standard: EN13501 (Euroclass) Br S1

Flame Retardant to USA and Canadian Standard: ASTM E 648 Critical Radiant Flux: Class 1

Anti-Slip to EN13036-4 2003 (Dry: 100 PTV and Wet: 50 PTV)

Defence Standard 02-713: Toxicity Index 4.7



Note: Refer to current [Installation Guide](#) for correct product usage.

DISCLAIMER

Information contained within this "Product Data Sheet" is for guidance only and intended for experienced industry professionals. As conditions of usage and installation are beyond our control, we do not warrant performance obtained. Information is given to the best of Entry Point International's knowledge, based on manufacturers input, laboratory testing and practical experience.

Entry Point INTERNATIONAL LLC
866-664-3129

www.entrypointusa.com

TECHNICAL DATA

Material Construction:
Polyvinyl Chloride (PVC) >95%

Description:
Flame-Retardant Interlocking Edges
from Recycled PVC

Intended Use:
Add Corners or Beveled Edges to the
Rhino Tile FR as well as Higher
Border Visibility.

Appearance:
Yellow

Unit:
Edge

Dimensions:
101.6 mm x 500 mm (~3.6" x 19.2")

Weight:
.22 kg (~1 lb)

Stocking Units:
Box of 50 Edges – Male or Female

Storage Recommendations:
Store away from heat sources, open
flames and strong acids and/or
bases. Store indoors within
recommended storage temperatures
10°C to 35°C / 50°F to 95°F. Keep
out of direct sunlight. Store Flat.