

# ENTRY POINT INTERNATIONAL LLC

## Product Data Sheet

### ProplexFR<sup>®</sup> 250

#### TECHNICAL DATA

Material Construction:  
Polypropylene with Antistatic Additive

Description:  
Flame-Retardant, Antistatic, Semi-Rigid Construction Polypropylene Sheet

Intended Use:  
Temporary Protection on Horizontal and Vertical Surfaces

Appearance:  
Translucent / White

Unit:  
Sheet

Dimensions:  
2.25 m x 1 m (~7.4' x 3.3')

Thickness:  
2 mm (0.08")

Weight:  
.56 kg (~1.2 lbs)

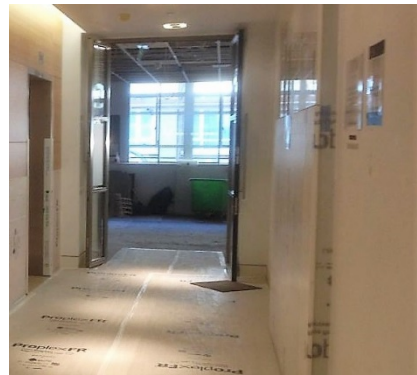
Stocking Units:  
Individual Sheet or 500 Sheet Pallet

Surface Resistance:  
10<sup>11</sup> Ohms

Storage Recommendations:  
Store away from heat sources, open flames and strong acids and/or bases. Store indoors within recommended storage temperatures 10°C to 35°C / 50°F to 95°F. Keep out of direct sunlight. Store Flat.

Issue Date:  
11/01/20

Revision Date:  
11/01/20



#### PRODUCT DESCRIPTION

ProplexFR 250 is an ultra-light weight, Flame-Retardant protection board with a twin-wall construction for a strong, yet lightweight, solution to surface protection. Used in a variety of internal applications during building, construction and refurbishment projects, the fluted polypropylene sheets can be cut, curved or creased to fit any surface.

#### KEY FEATURES & BENEFITS

- Less labor, quicker, easier and more efficient to install; one man can lift 30+ sheets
- Safer, lower risk to workers during installation and handling, no splinters
- One-man vs two men handling, can be cut with a utility knife and is easy to clean
- No warping when wet, unlike plywood, requires virtually NO maintenance
- After installation, less man hours to monitor and inspect the temporary protection
- More cost effective for every project due to speed of installation and extended life
- Conforms to very tight curves and sharp angles, reducing the need for cutting and taping
- Can be paired with Hanger Pins for easy mounting and removal
- 100% Recyclable and Flame-Retardant
- Can be custom printed or colored

#### TEST DATA

LPS1207: Certificate Nr 843a: Classification: LPS1207Pass

EN 13501-1:2007+A1:2009: Certificate Nr WF 340 284: Classification: B s1d0

NFPA 701 (2015 Edition): Certificate Nr 16-002-457: Pass

ASTM E648: Certificate Nr 17-002-606 (B): Class 1 (Average 0.67 W/cm2)

**Note: Refer to current [Installation Guide](#) for correct product usage.**

#### DISCLAIMER

Information contained within this "Product Data Sheet" is for guidance only and intended for experienced industry professionals. As conditions of usage and installation are beyond our control, we do not warrant performance obtained. Information is given to the best of Entry Point International's knowledge, based on manufacturers input, laboratory testing and practical experience.

**Entry Point** INTERNATIONAL LLC  
866-664-3129

[www.entrypointusa.com](http://www.entrypointusa.com)